

Ostrander Point Wind Energy Park



Information Newsletter July, 2008

A MESSAGE FROM GILEAD

Dear Neighbour,

I hope you are enjoying some fun and relaxation during these summer months. So far it has been an exciting year for Gilead Power Corporation. We have expanded our team both internally and externally, and have received continued interest in our Ostrander Point Project. We encourage you to tell your friends, neighbours and colleagues about our Project.

Some of the changes that have occurred within Gilead since the New Year include: the appointment of Mr. Marvin Pelletier, to Vice President of Stakeholder Relations as well as the addition of Mrs. Maureen Oliver, Manager Environmental Permitting and Planning and Mr. Kevin Sorensen, Manager of Engineering.

As you all know, we are moving through the Environmental Screening Process with Stantec Consulting Ltd. and have made some excellent progress. Based on stakeholder feedback, we have increased our bird monitoring efforts by collaborating on a radar study with Acadia University and Environment Canada, hired Hardy Stevenson and Associates to complete a Socio-Economic Assessment, and asked to present at a Prince Edward County Council Meeting.

Moving forward, we will be holding our second Open House at the end of August, 2008. When a date has been finalized, a notice will be published in local newspapers as well as mailed to all stakeholders on our mailing list. In addition, Stantec will be completing the baseline studies and preparing the Draft Environmental Review Report. We anticipate that the Draft Report will be completed in late Fall 2008. The Draft Report will be made available for review upon completion.

This is an exciting time for Gilead, we look forward to hearing from you as we develop our Project within Prince Edward County. Please come and introduce yourself to me at our next Open House.

Sincerely,

Paul Pede
President

SOME QUICK FACTS ABOUT THE OSTRANDER POINT WIND ENERGY PARK

- If approved, the Project would consist of up to 12 wind turbines with a capacity of approximately 20 MW and an associated 44 kV transmission line.
- The Project's within the ward of South Marysburgh, Prince Edward County, Ontario.
- A Notice of Commencement of an Environmental Screening and Review for the Project was originally published and distributed to the community during the week of December 10, 2007.
- Gilead is undertaking a detailed Environmental Review in accordance with Ontario Regulation 116/01 of the Environmental Assessment Act and as outlined in the Ontario Ministry of the Environment's "Guide to Environmental Assessment Requirements for Electricity Projects" (March 2001).
- Stantec Consulting Ltd. (Stantec) has been retained by Gilead to complete the Environmental Review.
- Gilead issued a Notice of Modification during the week of May 20, 2008 to update the community about current project events.

WHAT'S HAPPENING NOW?

Since the Notice of Modification, Gilead, Stantec, and a number of other consultants have undertaken the following Project activities in preparation for the release of the Draft Environmental Review Report:

- Gilead issued a Notice of Geotechnical Investigation commencing June 23 on the project site.
- Environment Canada approved the 2008 Ostrander Point Bird Work Program.
- Spring bird migration and breeding bird field studies have been completed.

WHAT'S HAPPENING NEXT?

In addition to the activities currently taking place, a number of activities will occur in the near future. Key items are outlined below:

- A Public Open House is planned for late August 2008 to present the final Project layout and some of the findings from the studies conducted for the Draft Environmental Review Report.
- A Socio-economic Effects Assessment of the project will be undertaken in the community.

- One round of fall migratory bird field studies have been completed, with another round commencing this summer.
- Commencement of the bat monitoring program in late July.
- Baseline data collection.
- Additional technical studies such as an Environmental Noise Assessment, Archaeological Assessment, and Visual Change Assessment are currently being conducted.
- On-going stakeholder and agency consultation.

- The Project design will be refined using the results of the baseline data collection, effects assessments, and community and agency input.
- The Draft Environmental Review Report will be prepared incorporating the technical reports and ongoing discussions with the community and agencies. The Draft Environmental Review Report is anticipated to be released in late Fall 2008 for public and agency review and comment.

COMMENTS FROM JANUARY 17, 2008 PUBLIC OPEN HOUSE

This list includes some of the more common topics raised by our neighbours at our last Public Open House. To view a comprehensive list of comments and Gilead's response, please visit the Project website: www.gileadpower.com

Environmental Noise

An Environmental Noise Impact Assessment will be completed and submitted to the Ontario Ministry of the Environment (MOE) for approval, and its results will be published in the Environmental Review Report (ERR). The MOE noise guidelines for wind turbines, to which the Project must adhere, are most stringent for Class 3 receptors (Class 3 areas are rural and/or small communities with an acoustic environment that is dominated by natural sounds and has little or no road traffic). We expect that most receptors in the study area will be identified as Class 3, reflecting the generally quiet nature of the area. Therefore, Gilead will be adhering to the most stringent guidelines during the operation of the wind plant.

Shadow Flicker

A Shadow Flicker Assessment will be completed and included in the ERR. It is anticipated that shadow flicker occurrence at residences in the study area will not be significant. Shadow flicker values can also be considerably reduced when certain factors are taken into consideration, such as; presence of trees, high vegetation, or other obstacles between house and turbines, periods of low or high wind speed; during which turbines will not be operational, and the directional orientation of the wind turbines in relation to the sun.

Natural Environment

In addition to completing a detailed review of previous studies conducted in the area, bird, bat and other wildlife surveys are being conducted. We are also continuing to work with government agencies, such as the Ontario Ministry of Natural Resources, Environment Canada, and the Canadian Wildlife Service, to ensure that our data collection and analysis methodologies adhere to relevant and current protocols, policies, and legislation. The final results of these activities will be presented in the ERR.

Visual Change

A Visual Change Assessment will be conducted to identify the changes to the viewscape. The assessment will model the appearance of the wind turbines from various vantage points throughout the surrounding area. With regard to the turbines themselves, while maintaining compliance with Transport Canada regulations, the colour of wind turbines will be white/off-white - a colour which minimizes contrast with the background sky - and to the extent possible, Gilead will minimize the number of turbines requiring aviation safety lights.

Property Values

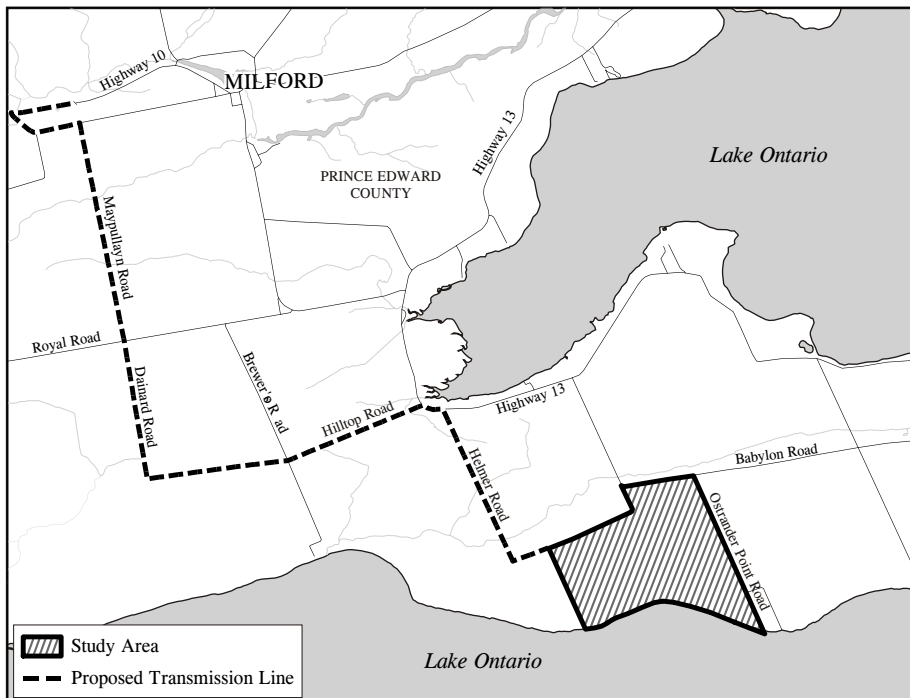
Based upon the data reviewed to date in other areas with established wind farms (e.g., Canada, USA, Europe, and Australia), no evidence of a material negative effect on property value as a result of the presence of wind farms was documented. Furthermore, the Ontario data suggests that wind farms have a neutral or positive effect on property values; which is consistent with international trends and experiences.

Setbacks and Turbine Siting

Environmental and social constraints such as the presence of residences, wells, roads, locations of sensitive wildlife, wetlands, watercourses, and woodlots are key factors in siting project infrastructure. Setbacks and turbine siting are undergoing evaluation and will be discussed in the ERR.

Land Use

Once the Project has been constructed and enters the operational phase, residents can continue to enjoy the area as they have done in the past.



YOUR INPUT IS IMPORTANT TO US

Your input is an important component of the consultation process. Your contribution allows us to become better informed about the study area, along with the potential effects of the Project.

Participation allows you to become better informed about the Project and to have your thoughts or opinions included in the EA process. We are responsive to concerns and carefully consider all of the feedback we receive. Your feedback can positively affect the design and construction of the Project.

Here's how you can provide input to the Project:

- Attend our next Public Open House
- Call us collect at (519)836-6050 (ask for Mark Kozak)
- Send an email with your comments to: ostanderpoint@stantec.com
- Send a fax to (519) 836-2493
- Send written comments by mail to:

Mark Kozak
Stantec Consulting Ltd.
361 Southgate Drive
Guelph, ON N1G 3M5



Visit us on the Web

We update the website as new information is available for the Project to provide timely and relevant information. This is part of our commitment to consult with the interested parties and inform local residents about the progress of the Project. Your feedback on the site, and the information presented, is always welcome. Visit us on a regular basis and look for updates at: www.gileadpower.com